

# Managing Controlled Terminologies Across Clinical Lifecycle Stages

A. Brooke Hinkson – Global Head, Clinical Information Governance  
Mihaela Simion – Manager, Metadata Curation

PharmaSUG SDE – 22 October 2014

# Overview

- **Evolving Information Governance Framework**
  - Review of the IG Network, Processes, and Data Standards
- **Controlled Terminology**
  - Current State
  - Maintenance Use Cases
  - Evolving Toward the Future State
- **Q & A**

# Information Governance Evolution



*We're establishing:*

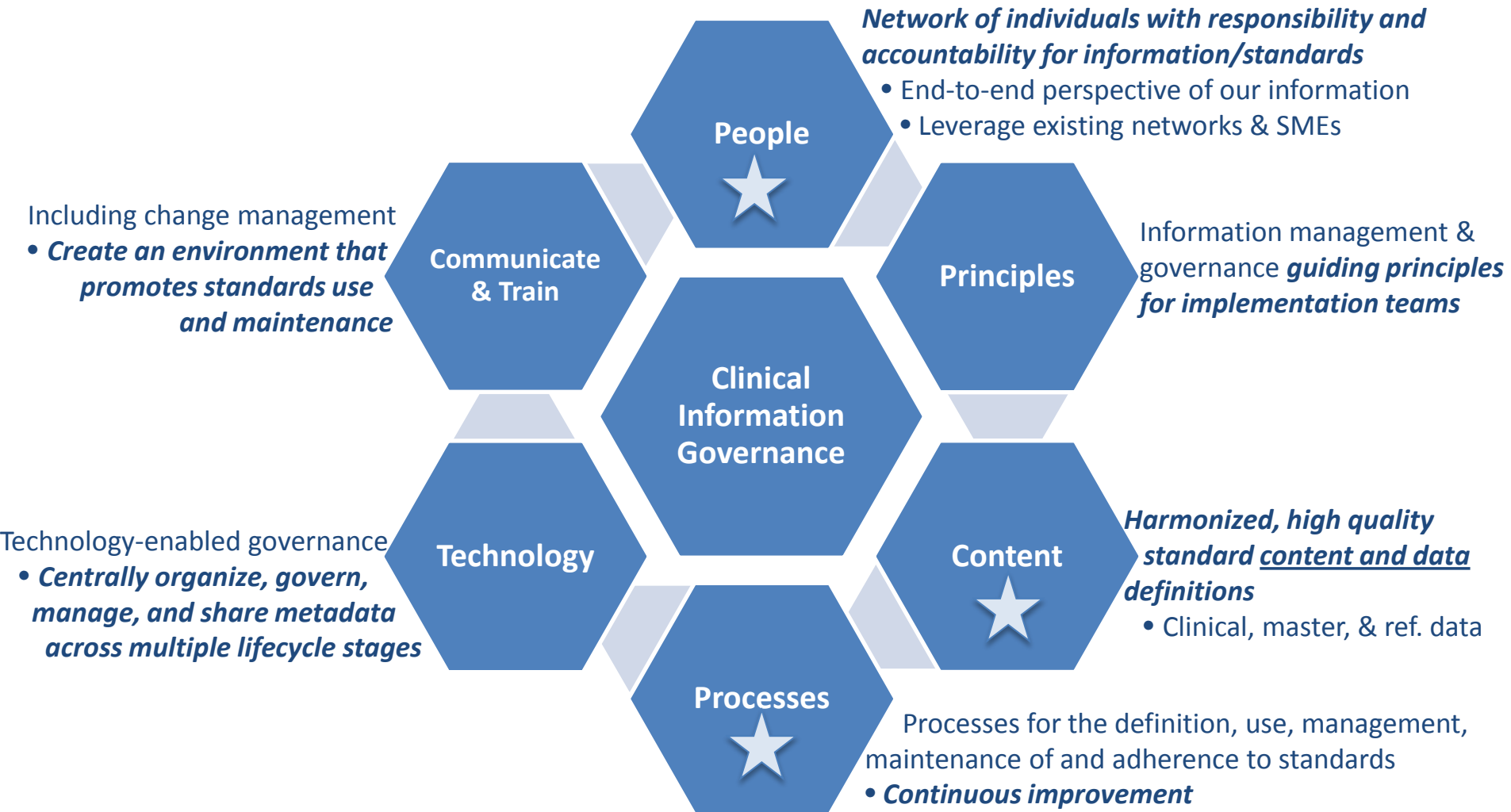
- *A culture and organizational structure to empower information governance*
- *Global processes to manage information across the clinical lifecycle*
- *A common set of industry-based global clinical information standards*
- *Centrally controlled, consistent, governed, & accessible standards metadata*
  - *Facilitate the use, reuse, maintenance, exchange & sharing of metadata*



*\*For the purpose of this presentation only; Sanofi is comprised of additional entities not listed on this slide*

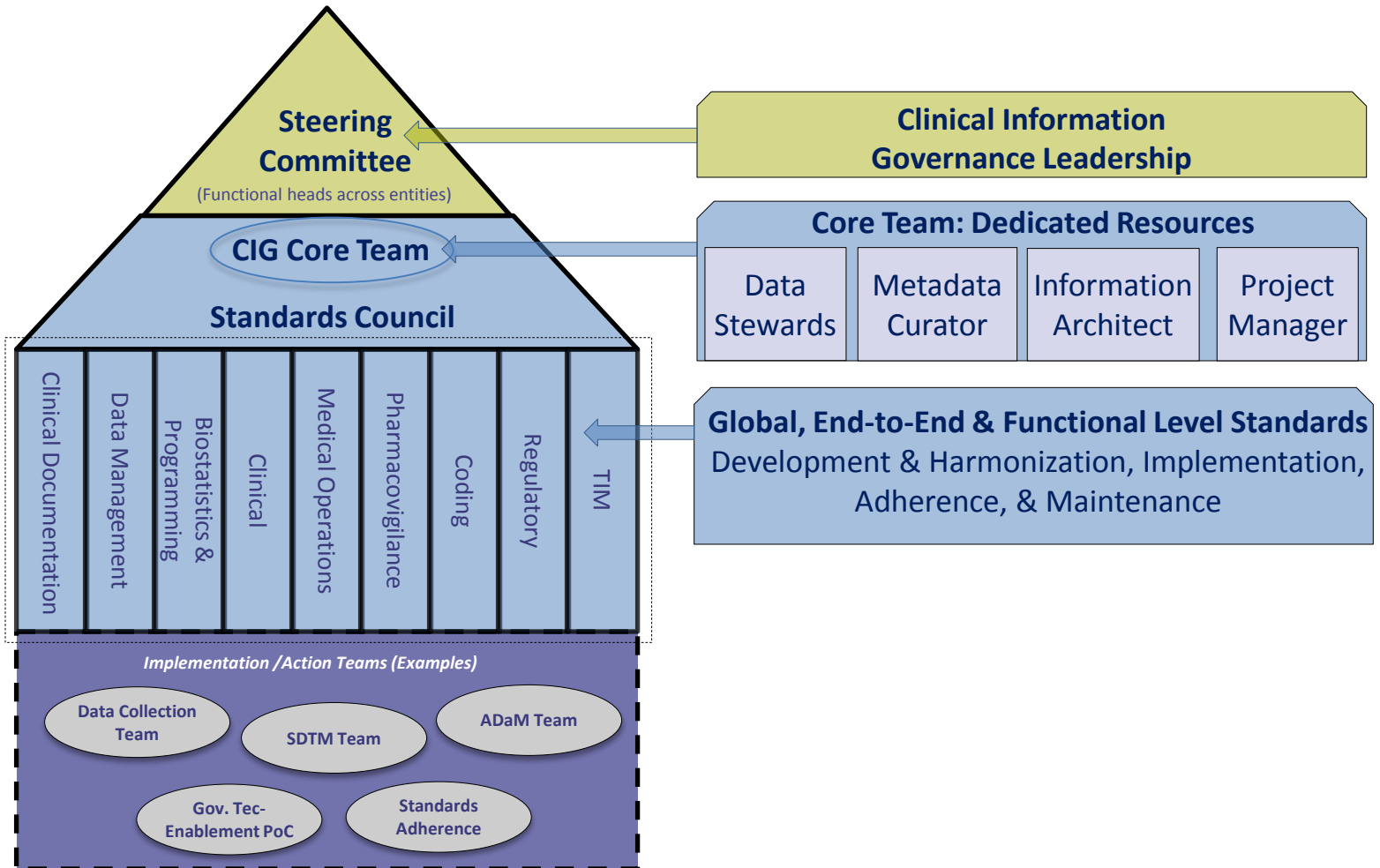
# Governance Framework

# Information Governance Provides A Framework

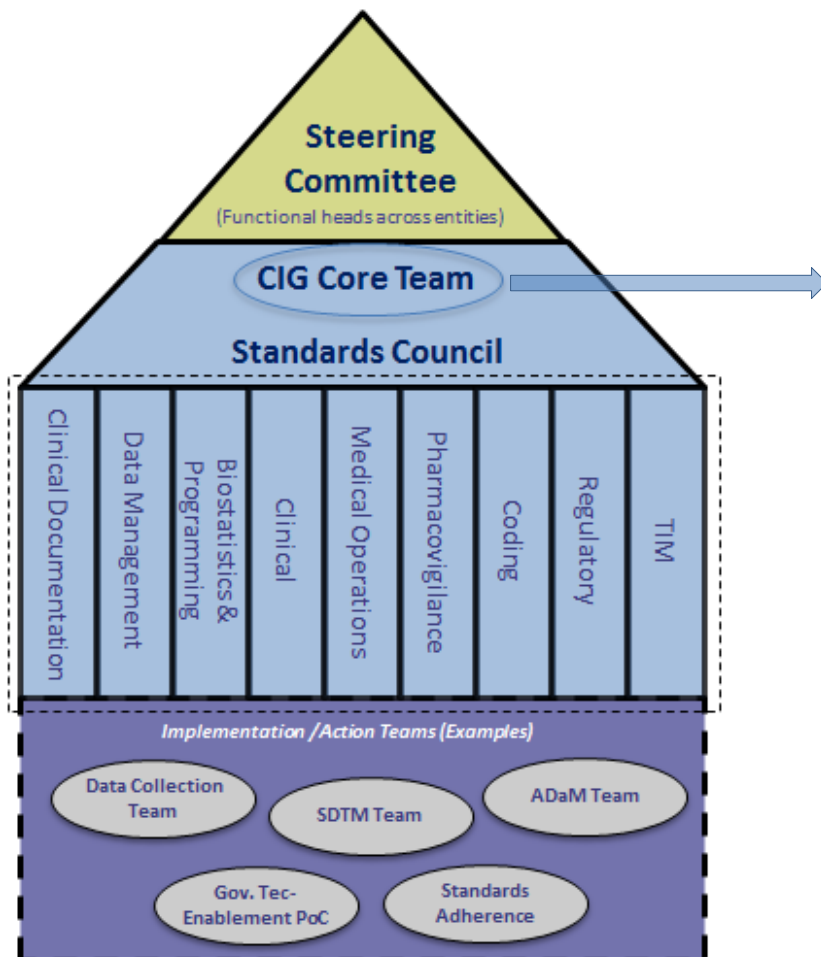


*People, processes, and tools within the framework ensure information is well defined, of high quality, applied consistency, and properly managed across lifecycle stages*

# Clinical Information Governance Network



# Information Governance Processes



## EXAMPLES

**Develop Standards Metadata**  
(Global, incl. TA-Specific)

**Standards Metadata Change Control**  
(Global Standards Metadata)

**Standards Release Management**  
(Global Standards Metadata)

**Standards Waiver & Metadata Development**  
(Study-Level)

**Develop Study-Level SDTM**

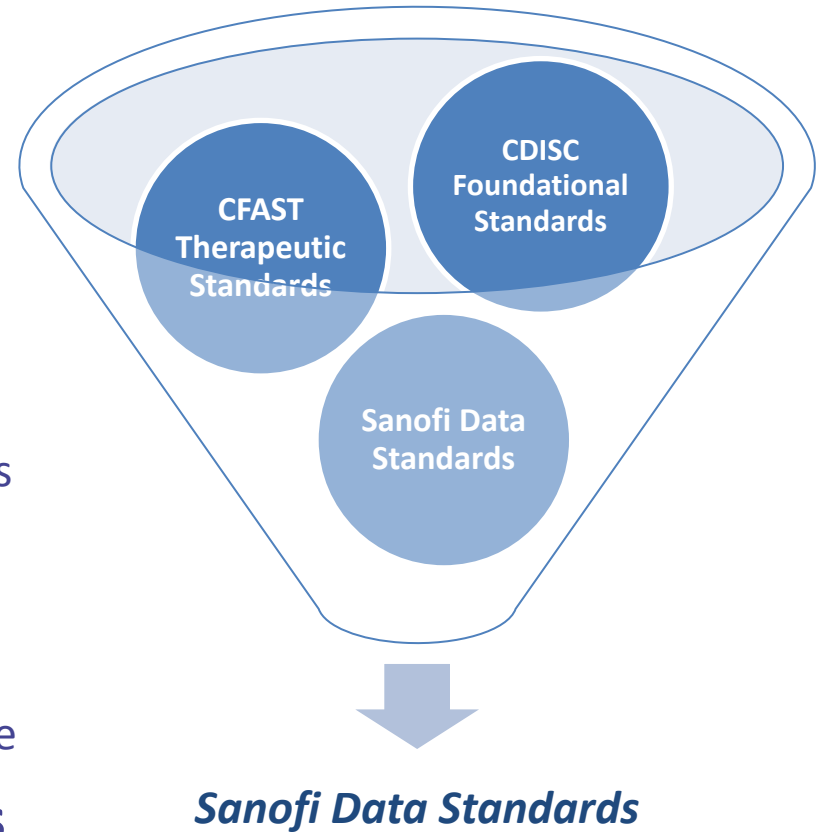
**Develop Study-Level ADaM**

**Perform Standards Maintenance**  
(Global Standards Metadata)

**Define and Maintain Reference Data**  
(Global Standards Metadata)

# Sanofi Clinical Data Standards\*

- **CDISC Foundational Standards**
  - **Data Collection**
    - CDASH
    - (Central) Lab
  - **Study Data Tabulation Datasets**
    - SDTM: Interventions, Events, Findings
  - **Analysis Datasets**
    - ADaM Datasets & Results Generation
  - **Controlled Terminology**
    - End-to-end across the clinical lifecycle
- **CFAST Therapeutic Area Standards**
  - Common data of interest for a therapeutic area that may be captured in addition to the foundational standards
- **Sanofi Data Standards**
  - In addition to industry standards





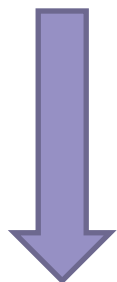
# Controlled Terminology: Current State

# Sanofi Controlled Terminology (CT) Harmonization

CDISC CT Release 2014-06-27

Code	Codelist Code	Codelist Extensible (Yes/No)	Codelist Name	CDISC Submission Value	CDISC Synonym(s)	CDISC Definition	NCI Preferred Term
------	---------------	------------------------------	---------------	------------------------	------------------	------------------	--------------------

ADaM 2011-01-07  
 CDASH 2014-03-28  
 CDE Glossary 2013-04-12  
 SDTM 2014-06-27  
 QS\_FT 2014-06-27



## Sanofi Harmonized Global CT Listing

Column Name	Versioning Impact
CODELIST_LONG_NAME	NO
CODELIST_SHORT_NAME	YES
CODELIST_EXTENSIBLE	YES
SASFMSTM	NO
DATA_TYPE	NO
ENDORSEMENT_LEVEL	NO
ENDORSEMENT_VALUE	NO
CODELIST_DEFINITION	NO
CODELIST_CODE	YES
CODE	YES
CODE_DEFINITION	NO
SUBMISSION_VALUE	YES
CDISC_SYNONYM	NO
NCI_PREFERRED_TERM	YES
CRF_DISPLAY_VALUE	YES
HAS_TRAN	NO
RANK	YES
DISPLAY_ORDER	NO
DECODE	YES
CODE_LIFECYCLE_STAGE	YES
SOURCE	NO
CDISC_RELEASE_140627	N/A



SANOFI\_CT\_Metadata (SDTM)  
 SANOFI\_CT\_Metadata (ADaM)

## Codelists for Data Collection

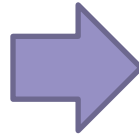
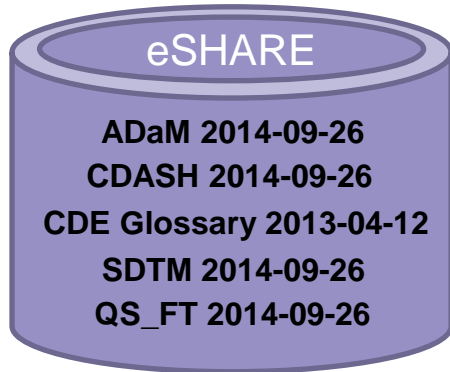
Code	Codelist Code	Codelist Extensible (Yes/No)	Codelist Name	(CDISC) Submission Value	CDISC Synonym(s)	CDISC/Sanofi Definition	NCI Preferred Term	CRF Display Value
------	---------------	------------------------------	---------------	--------------------------	------------------	-------------------------	--------------------	-------------------



# Sanofi Harmonized CT Maintenance

## CDISC CT Release 2014-09-26

Code	Codelist Code	Codelist Extensible (Yes/No)	Codelist Name	CDISC Submission Value	CDISC Synonym(s)	CDISC Definition	NCI Preferred Term
------	---------------	------------------------------	---------------	------------------------	------------------	------------------	--------------------



## Sanofi Harmonized Global CT Listing

Column Name	Versioning Impact
CODELIST_LONG_NAME	NO
CODELIST_SHORT_NAME	YES
CODELIST_EXTENSIBLE	YES
<i>SASFMNTM</i>	NO
<i>DATA_TYPE</i>	NO
<i>ENDORSEMENT_LEVEL</i>	NO
<i>ENDORSEMENT_VALUE</i>	NO
CODELIST_DEFINITION	NO
CODELIST_CODE	YES
CODE	YES
CODE_DEFINITION	NO
SUBMISSION_VALUE	YES
CDISC_SYNONYM	NO
NCI_PREFERRED_TERM	YES
<i>CRF_DISPLAY_VALUE</i>	YES
<i>HAS_TRAN</i>	NO
<i>RANK</i>	YES
<i>DISPLAY_ORDER</i>	NO
<i>DECODE</i>	YES
<i>CODE_LIFECYCLE_STAGE</i>	YES
<b>SOURCE</b>	NO
<i>CDISC_RELEASE_140627</i>	N/A
<i>CDISC_RELEASE_140926</i>	N/A

# Sanofi Harmonized CT Maintenance Use Cases

---

- Codelist/Code – additions/deletions
  - Codelist/Code – changes in attributes with impact on versioning
    - Codelist Short Name (i.e. CDISC Submission Value)
    - Codelist Code
    - Extensible Yes/No
    - Code
    - Code Submission Value
    - Code NCI Preferred Term
  - Codelist/Code – changes in attributes with no impact on versioning
    - Codelist Long Name
    - Codelist Definition
    - Code Definition
    - Code Synonym
    - Code CRF Display Value
-

# Sanofi Harmonized CT Maintenance – Use Case 1

## Codelist/Code flag assignment to track CDISC quarterly releases

### Codelist Additions

CODELIST_LO NG_NAME	CODELIST_ SHORT_NA ME	CODELIST_ EXTENSI BLE	CODELIST_ _CODE	CODE	CODE_DEFINITION	SUBMISSION_ VALUE	NCI_PREFERRED _TERM	CRF_DISPLAY _VALUE	CDISC_R RELEASE_ 131220	CDISC_R RELEASE_ 140328	CDISC_R RELEASE_ 140627	CDISC_R RELEASE_ 140926
Graft Type	GRAFTTYP	Yes	C117737	C117816	A vessel graft comprised of an art	ARTERIAL GRA	Free Arterial Graft					X
Graft Type	GRAFTTYP	Yes	C117737	C117817	A vessel graft comprised of an art	ARTERIAL GRA	In Situ Arterial Graft					X
Graft Type	GRAFTTYP	Yes	C117737	C117818	A vessel graft comprised of a veir	AUTOLOGOUS	Autologous Vein Graft					X
Graft Type	GRAFTTYP	Yes	C117737	C117819	An arterial graft harvested from a c	CADAVERIC GF	Cadaveric Arterial Graft					X
Graft Type	GRAFTTYP	Yes	C117737	C117820	A venous graft harvested from a c	CADAVERIC GF	Cadaveric Venous Graft					X
Graft Type	GRAFTTYP	Yes	C117737	C117821	A vessel graft comprised of two of	COMPOSITE G	Composite Vessel Graft					X
Graft Type	GRAFTTYP	Yes	C117737	C117822	A vessel graft comprised of the se	SAPHENOUS V	Saphenous Vein Graft					X
Graft Type	GRAFTTYP	Yes	C117737	C117823	A vessel graft comprised of non-b	SYNTHETIC GF	Synthetic Vessel Graft					X

### Code Additions

CODELIST_LO NG_NAME	CODELIST_ SHORT_NA ME	CODELIST_ EXTENSI BLE	CODELIST_ _CODE	CODE	CODE_DEFINITION	SUBMISSION_ VALUE	NCI_PREFERRED _TERM	CRF_DISPLAY _VALUE	CDISC_R RELEASE_ 131220	CDISC_R RELEASE_ 140328	CDISC_R RELEASE_ 140627	CDISC_R RELEASE_ 140926
SDTM Domain Abbreviation	DOMAIN	Yes	C66734	C117755	A domain for the agents administr	AG	Procedure Agents Domain					X
SDTM Domain Abbreviation	DOMAIN	Yes	C66734	C117756	A domain for named, stand-alone	FT	Functional Tests Domain					X
SDTM Domain Abbreviation	DOMAIN	Yes	C66734	C117757	A domain for inpatient and outpati	HO	Healthcare Encounters Domain					X

### Code Deletions

CODELIST_LO NG_NAME	CODELIST_ SHORT_NA ME	CODELIST_ EXTENSI BLE	CODELIST_ _CODE	CODE	CODE_DEFINITION	SUBMISSION_ VALUE	NCI_PREFERRED _TERM	CRF_DISPLAY _VALUE	CDISC_R RELEASE_ 131220	CDISC_R RELEASE_ 140328	CDISC_R RELEASE_ 140627	CDISC_R RELEASE_ 140926
ECG Test Code	EGTESTCD	Yes	C71153	C62121	The mean (average) direction (ra	PAXIS	Mean P Axis		X	X	X	
ECG Test Name	EGTEST	Yes	C71152	C62121	The mean (average) direction (ra	Summary (Mean) P Axis	Mean P Axis		X	X	X	

# Sanofi Harmonized CT Maintenance – Use Case 2

## Changes in attributes with impact on versioning

### Code Changes

CODELIST_LO NG_NAME	CODELIST_ SHORT_NA ME	CODELIST_ _EXTENSI BLE	CODELIST_ _CODE	CODE	CODE_DEFINITION	SUBMISSION_ VALUE	NCI_PREFERRED _TERM	CRF_DISPLAY _VALUE	CDISC_R RELEASE_ 131220	CDISC_R RELEASE_ 140328	CDISC_R RELEASE_ 140627	CDISC_R RELEASE_ 140926
Method	METHOD	Yes	C85492	C16290	An image of blood vessels.	ANGIOGRAM	Angiogram	Angiogram			X	X
Method	METHOD	Yes	C85492	C16805	An X-ray representation of blood vessels made after the injection of a radiopaque substance.	ANGIOGRAM	Lymphangiogram		X	X		

### Submission Value Changes

CODELIST_LO NG_NAME	CODELIST_ SHORT_NA ME	CODELIST_ _EXTENSI BLE	CODELIST_ _CODE	CODE	CODE_DEFINITION	SUBMISSION_ VALUE	NCI_PREFERRED _TERM	CRF_DISPLAY _VALUE	CDISC_R RELEASE_ 131220	CDISC_R RELEASE_ 140328	CDISC_R RELEASE_ 140627	CDISC_R RELEASE_ 140926
PK Parameter Units of Measure	PKUNIT	Yes	C85494	C85657	Liters per gram per day.	L/g/day	Liter per Gram per Day		X	X	X	
PK Units of Measure	PKUNIT	Yes	C85494	C85657	Liters per day (flow), divided by grams (weight).	(L/day)/g	Liter per Gram per Day					X

### NCI Preferred Term Changes

CODELIST_LO NG_NAME	CODELIST_ SHORT_NA ME	CODELIST_ _EXTENSI BLE	CODELIST_ _CODE	CODE	CODE_DEFINITION	SUBMISSION_ VALUE	NCI_PREFERRED _TERM	CRF_DISPLAY _VALUE	CDISC_R RELEASE_ 131220	CDISC_R RELEASE_ 140328	CDISC_R RELEASE_ 140627	CDISC_R RELEASE_ 140926
Anatomical Location	LOC	Yes	C74456	C12664	The portion of the body that lies between the thorax and the pelvis. (NCI)	ABDOMINAL CAVITY	Abdomen	Abdominal Cavity				X
Anatomical Location	LOC	Yes	C74456	C12664	The portion of the body that lies between the thorax and the pelvis. (NCI)	ABDOMINAL CAVITY	Abdominal Cavity	Abdominal Cavity	X	X	X	

# Sanofi Harmonized CT Maintenance – Use Case 3

## Changes in attributes with no impact on versioning (1)

### Changes in Code Synonym(s)

Code	Codelist Code	Codelist Extensible (Yes/No)	Codelist Name	CDISC Submission Value	CDISC Synonym(s)	CDISC Definition	NCI Preferred Term
C64780	C71620		Unit	fL	Femtoliter	The unit of volume equal 10E-15 liter.	Femtoliter

ReadMe SDTM Terminology 2014-06-27

Code	Codelist Code	Codelist Extensible (Yes/No)	Codelist Name	CDISC Submission Value	CDISC Synonym(s)	CDISC Definition	NCI Preferred Term
C64780	C71620		Unit	fL	Cubic Micrometer; Cubic Micron; Femtoliter: um3	The unit of volume equal 10E-15 liter.	Femtoliter

ReadMe SDTM Terminology 2014-09-26

CODELIST_LO NG_NAME	CODELIST_SHORT_NAME	CODELIST_EXTENSIBLE	CODELIST_CODE	CODE	CODE_DEFINITION	SUBMISSION_VALUE	CDISC_SYNONYM	NCI_PREFERRED_TERM	CRF_DISPLAY_VALUE	CDISC_RELEASE_131220	CDISC_RELEASE_140328	CDISC_RELEASE_140627	CDISC_RELEASE_140926
Unit	UNIT	Yes	C71620	C64780	The unit of volume equal 10E-15 liter.	fL	Cubic Micrometer; Cubic Micron; Femtoliter: um3	Femtoliter	fL	X	X	X	X

# Sanofi Harmonized CT Maintenance – Use Case 4

## Changes in attributes with no impact on versioning (2)

### Changes in Code Definition

Code	Codelist Code	Codelist Extensible (Yes/No)	Codelist Name	CDISC Submission Value	CDISC Synonym(s)	CDISC Definition	NCI Preferred Term
C32123	C74456		Anatomical Location	AORTIC ARCH	Aortic Arch	The curved section of the aorta between the ascending and the descending tracts. The brachiocephalic, left common carotid and left subclavian arteries branch from the aorta at this section. (NCI)	Aortic Arch

ReadMe SDTM Terminology 2014-06-27

Code	Codelist Code	Codelist Extensible (Yes/No)	Codelist Name	CDISC Submission Value	CDISC Synonym(s)	CDISC Definition	NCI Preferred Term
C32123	C74456		Anatomical Location	AORTIC ARCH	Aortic Arch	The curved segment of the aorta between the ascending and the descending segments.	Aortic Arch

ReadMe SDTM Terminology 2014-09-26

CODELIST_LO NG_NAME	CODELIST_SHORT_NA ME	CODELIST_EXTENSI BLE	CODELIST_CODE	CODE	CODE_DEFINITION	SUBMISSION_VALUE	CDISC_SYNONYM	NCI_PREFERRED_TERM	CRF_DISPLAY_VALUE	CDISC_R RELEASE_131220	CDISC_R RELEASE_140328	CDISC_R RELEASE_140627	CDISC_R RELEASE_140926
Anatomical Location	LOC	Yes	C74456	C32123	The curved segment of the aorta between the ascending and the descending segments.	AORTIC ARCH	Aortic Arch	Aortic Arch	Aortic Arch	X	X	X	X



# Controlled Terminology: Evolving Toward the Future State

# Introducing ... Metadata Management Tool PoC

CDISC Release YYYY-MM-DD

## CDE Glossary

A	B	C	D	E	F	G	H	I	J
Code	CodeList Code	CodeList Extensible (Y/N)	CodeList Name	CDISC Submission Value	CDISC Sponso(r)g(s)	CDISC Definition	NCI Preferred Term		
1	C4952	C4972	No	Action	ACN	Action Taken with Study	Terminology	CDISC SDTM	Action Taken
2	C4952	C4972	Action	DOSE	DOSE	Increased	Increased	Increased	Increased
3	C4952	C4972	Action	DOSE NOT	DOSE NOT	Decreased	Decreased	Decreased	Decreased
4	C4952	C4972	Action	DOSE REDUCED	DOSE REDUCED	Reduced	Reduced	Reduced	Reduced
5	C4952	C4972	Action	DRUG	DRUG	Interrupted	Interrupted	Interrupted	Interrupted
6	C4952	C4972	Action	DRUG	DRUG	Interrupted	Interrupted	Interrupted	Interrupted
7	C4952	C4972	Action	DRUG	DRUG	Interrupted	Interrupted	Interrupted	Interrupted

## CDASH

A	B	C	D	E	F	G	H	I	J
Code	CodeList Code	CodeList Extensible (Y/N)	CodeList Name	CDISC Submission Value	CDISC Sponso(r)g(s)	CDISC Definition	NCI Preferred Term		
1	C4952	C4972	No	Action	ACN	Action Taken with Study	Terminology	CDISC SDTM	Action Taken
2	C4952	C4972	Action	DOSE	DOSE	Increased	Increased	Increased	Increased
3	C4952	C4972	Action	DOSE NOT	DOSE NOT	Decreased	Decreased	Decreased	Decreased
4	C4952	C4972	Action	DOSE REDUCED	DOSE REDUCED	Reduced	Reduced	Reduced	Reduced
5	C4952	C4972	Action	DRUG	DRUG	Interrupted	Interrupted	Interrupted	Interrupted
6	C4952	C4972	Action	DRUG	DRUG	Interrupted	Interrupted	Interrupted	Interrupted
7	C4952	C4972	Action	DRUG	DRUG	Interrupted	Interrupted	Interrupted	Interrupted

## SDTM

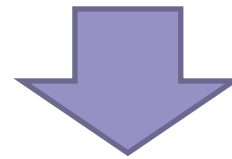
A	B	C	D	E	F	G	H	I	J
Code	CodeList Code	CodeList Extensible (Y/N)	CodeList Name	CDISC Submission Value	CDISC Sponso(r)g(s)	CDISC Definition	NCI Preferred Term		
1	C4952	C4972	No	Action	ACN	Action Taken with Study	Terminology	CDISC SDTM	Action Taken
2	C4952	C4972	Action	DOSE	DOSE	Increased	Increased	Increased	Increased
3	C4952	C4972	Action	DOSE NOT	DOSE NOT	Decreased	Decreased	Decreased	Decreased
4	C4952	C4972	Action	DOSE REDUCED	DOSE REDUCED	Reduced	Reduced	Reduced	Reduced
5	C4952	C4972	Action	DRUG	DRUG	Interrupted	Interrupted	Interrupted	Interrupted
6	C4952	C4972	Action	DRUG	DRUG	Interrupted	Interrupted	Interrupted	Interrupted
7	C4952	C4972	Action	DRUG	DRUG	Interrupted	Interrupted	Interrupted	Interrupted

## QS\_FT

A	B	C	D	E	F	G	H	I	J
Code	CodeList Code	CodeList Extensible (Y/N)	CodeList Name	CDISC Submission Value	CDISC Sponso(r)g(s)	CDISC Definition	NCI Preferred Term		
1	C4952	C4972	No	Action	ACN	Action Taken with Study	Terminology	CDISC SDTM	Action Taken
2	C4952	C4972	Action	DOSE	DOSE	Increased	Increased	Increased	Increased
3	C4952	C4972	Action	DOSE NOT	DOSE NOT	Decreased	Decreased	Decreased	Decreased
4	C4952	C4972	Action	DOSE REDUCED	DOSE REDUCED	Reduced	Reduced	Reduced	Reduced
5	C4952	C4972	Action	DRUG	DRUG	Interrupted	Interrupted	Interrupted	Interrupted
6	C4952	C4972	Action	DRUG	DRUG	Interrupted	Interrupted	Interrupted	Interrupted
7	C4952	C4972	Action	DRUG	DRUG	Interrupted	Interrupted	Interrupted	Interrupted

## ADaM

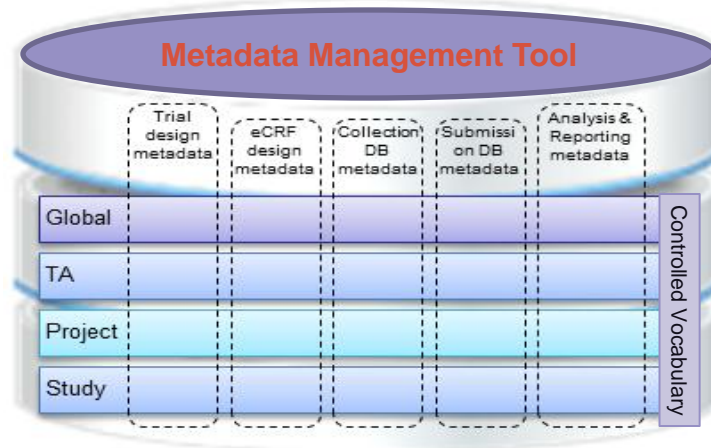
A	B	C	D	E	F	G	H	I	J
Code	CodeList Code	CodeList Extensible (Y/N)	CodeList Name	CDISC Submission Value	CDISC Sponso(r)g(s)	CDISC Definition	NCI Preferred Term		
1	C4952	C4972	No	Action	ACN	Action Taken with Study	Terminology	CDISC SDTM	Action Taken
2	C4952	C4972	Action	DOSE	DOSE	Increased	Increased	Increased	Increased
3	C4952	C4972	Action	DOSE NOT	DOSE NOT	Decreased	Decreased	Decreased	Decreased
4	C4952	C4972	Action	DOSE REDUCED	DOSE REDUCED	Reduced	Reduced	Reduced	Reduced
5	C4952	C4972	Action	DRUG	DRUG	Interrupted	Interrupted	Interrupted	Interrupted
6	C4952	C4972	Action	DRUG	DRUG	Interrupted	Interrupted	Interrupted	Interrupted
7	C4952	C4972	Action	DRUG	DRUG	Interrupted	Interrupted	Interrupted	Interrupted



## Sanofi Harmonized CT

### Column Name

CODELIST\_LONG\_NAME  
CODELIST\_SHORT\_NAME  
CODELIST\_EXTENSIBLE  
SASFMTNM  
DATA\_TYPE  
ENDORSEMENT\_LEVEL  
ENDORSEMENT\_VALUE  
CODELIST\_DEFINITION  
CODELIST\_CODE  
CODE  
CODE\_DEFINITION  
SUBMISSION\_VALUE  
CDISC\_SYNONYM  
NCI\_PREFERRED\_TERM  
CRF\_DISPLAY\_VALUE  
HAS\_TRAN  
RANK  
DISPLAY\_ORDER  
DECODE  
CODE\_LIFECYCLE\_STAGE  
SOURCE

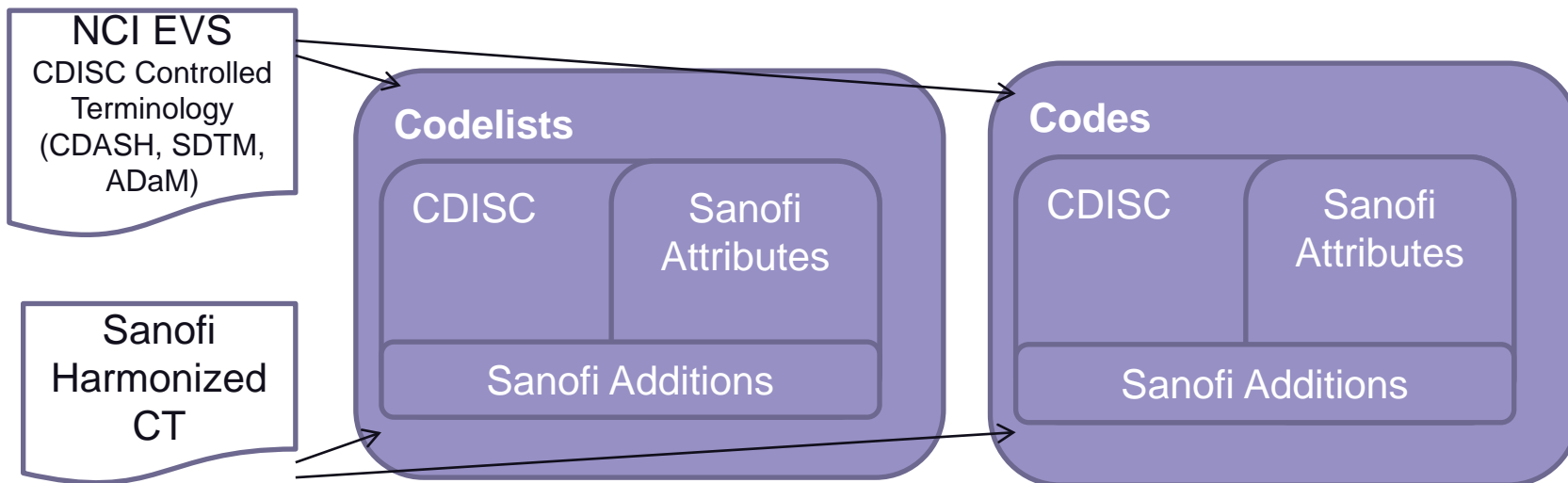


# Why a Metadata Management Tool?

---

- Semantic Web Technology
  - flexible modeling driven by semantic standards
  - powerful tools to load data from various sources (e.g., spreadsheets)
  - customizable dashboards for metadata search and curation
  - robust architecture capable of integrating with other systems
- Semantic Information Modeling = Ontology
  - *“...moves beyond structural, logical data modeling in the sense that it models semantics (meaning) and relationships of data. It unifies vocabularies (terms and concepts) across multiple knowledge domains.”*
  - *Ontology solves problems with:*
    - *Information Integration*
    - *Model Transformation*
    - *Text Understanding*
    - *Search and Navigation*
    - *Document Preparation*

# Metadata Management Tool – CT Ontology



## Codelist Implementation Example:

Short Name	CDISC Code	Long Name	Definition	Extensible	NCI Preferred Term	Source	Original Endorse...	Endorsements	Originating Lifecy...	Applicable Lifecy...
ACN	C66767	Action Taken with Study Treatment	Terminology specifying changes to the study treatment as a result of an adverse event.	False	CDISC SDTM Action Taken with Study Treatment Terminology	CDISC	Global	Global	Data Tabulations	Data Collection, Data Tabulations, Statistical Analysis, Study Planning
ACN_01	C66767	Action Taken with Study Treatment Subset 01	Terminology specifying changes to the study treatment as a result of an adverse event.	False		Internal	Global	Global	Data Tabulations	Data Collection, Data Tabulations, Statistical Analysis, Study Planning
ACN_02	C66767	Action Taken with Study Treatment Subset 02	Terminology specifying changes to the study treatment as a result of an adverse event.	False		Internal	Global	Global	Data Collection, Data Tabulations	Data Collection, Data Tabulations, Statistical Analysis, Study Planning

# POC Metadata – Linking the Information

## Excel Plug-in

DATA_TYP	ENDORSE	ENDORSE	CODELIST	CODELIST	CODELIST	CODE	CODE_DE	SUBMISSI	DISC_SY	NCI_PREF	CRF_DISF	HAS_TRAI	INT_TRAN	RANK
text	Global	II	Study Plan	Terminolog	C66767			DOSE DELAYED			Dose Delayed			8
text	Global	II	Study Plan	Terminolog	C66767			DOSE DELAYED AND REDUCE			Dose Delayed and Reduced			9
text	Global	II	Study Plan	Terminolog	C66767	C49503	An indicatic	DOSE INCREASED			Dose Incre	Dose Increased		5
text	Global	II	Study Plan	Terminolog	C66767	C49504	An indicatic	DOSE NOT CHANGE			Dose Not C	Dose Not Changed		1
text	Global	II	Study Plan	Terminolog	C66767	C49505	An indicatic	DOSE REDUCED			Dose Redu	Dose Reduced		2
text	Global	II	Study Plan	Terminolog	C66767	C49501	An indicatic	DRUG INTERRUPTED			Drug Interri	Drug Interrupted		3
text	Global	II	Study Plan	Terminolog	C66767	C49502	An indicatic	DRUG WITHDRAWN			Drug Withhd	Drug Withdrawn		4
text	Global	II	Study Plan	Terminolog	C66767	C48660	Determinat	NOT APPLI NA; Not Ap			Not Applic	Not Applicable		6
text	Global	II	Study Plan	Terminolog	C66767	C17998	Not known	UNKNOWN U; Unknow			Unknown	Unknown		7
text	Global	II	Study Plan	Terminolog	C66767	C49503	An indicatic	DOSE INCREASED			Dose Incre	Dose Increased		
text	Global	II	Study Plan	Terminolog	C66767	C49504	An indicatic	DOSE NOT CHANGE			Dose Not C	Dose Not Changed		
text	Global	II	Study Plan	Terminolog	C66767	C49505	An indicatic	DOSE REDUCED			Dose Redu	Dose Reduced		
text	Global	II	Study Plan	Terminolog	C66767	C49501	An indicatic	DRUG INTERRUPTED			Drug Interri	Drug Interrupted		
text	Global	II	Study Plan	Terminolog	C66767	C49502	An indicatic	DRUG WITHDRAWN			Drug Withhd	Drug Withdrawn		
text	Global	II	Study Plan	Terminolog	C66767	C48660	Determinat	NOT APPLI NA; Not Ap			Not Applic	Not Applicable		
text	Global	II	Study Plan	Terminolog	C66767			DOSE DELAYED			Dose Delayed			
text	Global	II	Study Plan	Terminolog	C66767			DOSE DELAYED AND REDUCE			Dose Delayed and Reduced			

## Properties

**Applicable Lifecycle Stages** *Lifecycle Stages*  
 These are the life cycle stages which use this codelist. Allowable values are "Study Pla...  
 → 8

**Author** *String*  
 - no comments -  
 → sysadmin AnzoGetCurrentUserName()

**CDISC Code** *String*  
 Unique numeric code randomly generated by NCI Thesaurus (NCIt) and assigned t...  
 → C66767

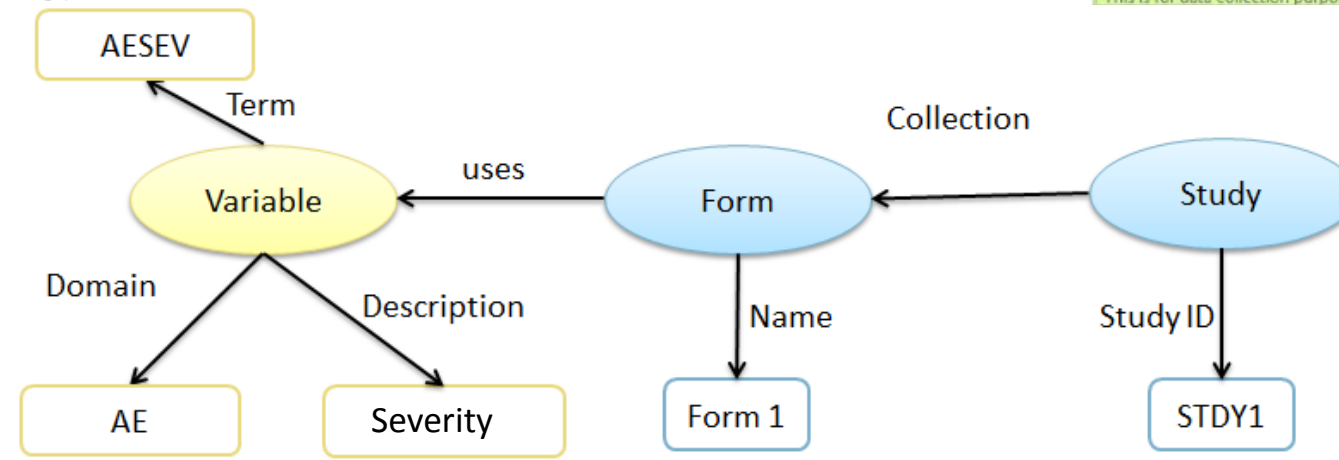
**Codelist** *Codelist*  
 Every Code exists within the context of exactly 1 Codelist, and if the same Code/Submi...  
 → ACN

**Short Name** *String*  
 → ACN

**Consider for Endorsement Promotion** *Boolean*  
 - no comments -  
 → False IF(F2="Global",False,True)

**CRF Display Value** *String*  
 This is for data collection purposes only. This is the text to appear on the CRF. As speci...

## Ontology for Sanofi



# Our Journey Continues...

- Implementing and maintaining controlled terminology is a challenge we're facing industry-wide
- We've shared our approach today and insight into our future direction
  - effectively managing controlled terminology requires people, processes, & technology to ensure the consistent use/reuse
- We would like to hear your feedback & insights as well!

# Managing CT across Clinical Lifecycle Stages

---

Thank you!

Questions?

[Brooke.Hinkson@Sanofi.com](mailto:Brooke.Hinkson@Sanofi.com)

[Mihaela.Simion@Sanofi.com](mailto:Mihaela.Simion@Sanofi.com)